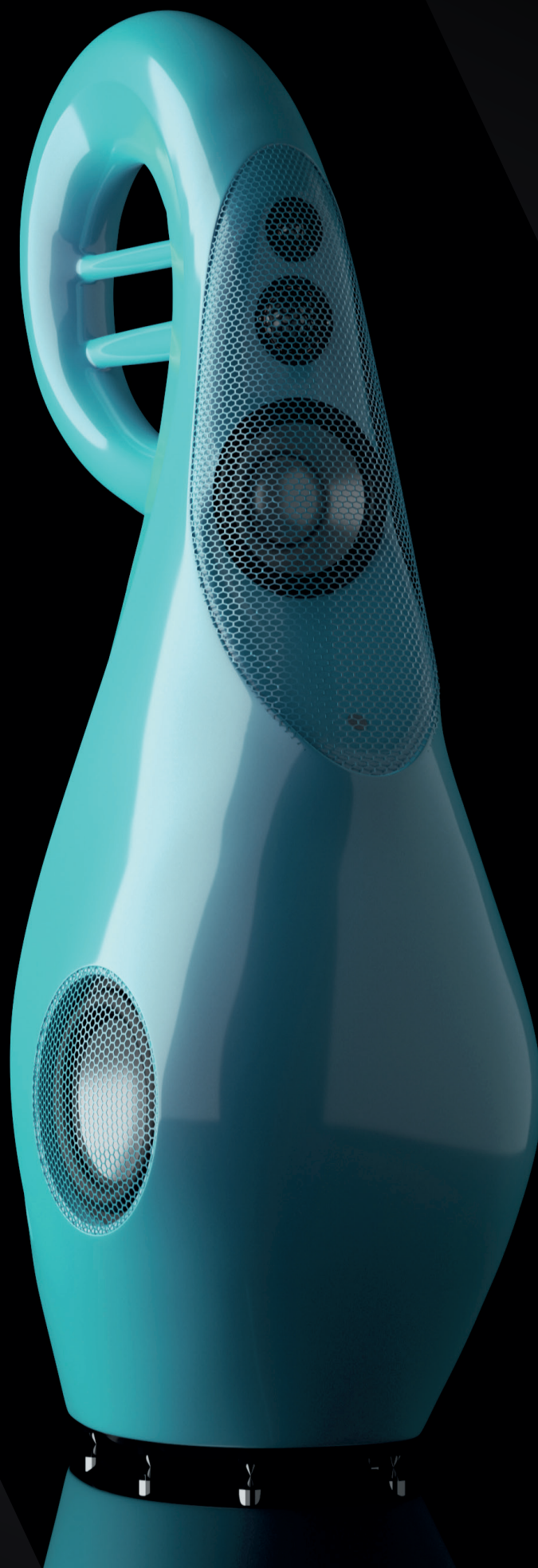




VIVID *audio*

GIYA G3 SERIES 2

Enclosing a volume of just over one quarter of that of the G1, the G3 is the answer to those seeking a package which is easily accommodated into the more typical home environment.



GIYA G3 SERIES 2

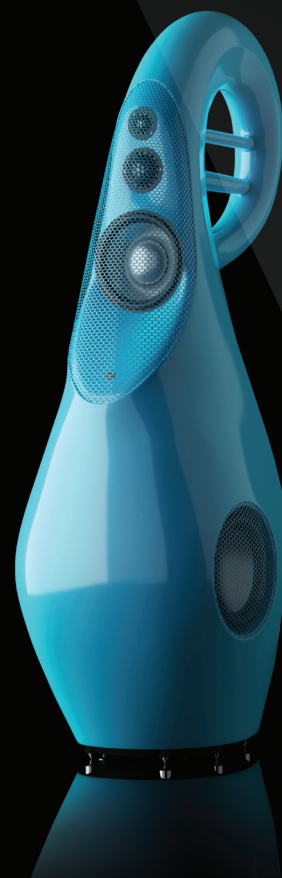
RELATIVE VALUES

Retaining the motor structure and suspension profiles of the larger siblings, the G3 is capable of producing substantial bass energy despite its reduced volume. The top of the bass enclosure displays the now uniquely familiar curl of the tapered tube absorber to completely eliminate the top to bottom resonances and deliver sharp accurate bass.

Equipped with the same D26, D50 and C125s drivers as the larger Giya's for the high and mid frequencies, the bass is handled by a pair of C135 units, set in a reaction-cancelling mount.

Specification

| | |
|--|--|
| Configuration | 4-way, 5 driver |
| Cabinet material | Glass reinforced balsa cored sandwich composite, carbon fibre base |
| Cabinet colour | Piano Black, Pearl White, Oyster Matte |
| Bespoke cabinet colour | Bespoke colour options available on request |
| Drive units | HF: D26 – 26 mm metal dome unit with Tapered Tube loading Mid: D50 – 50 mm metal dome unit with Tapered Tube loading Lower-mid: C125s - 125 mm alloy cone unit with Tapered Tube loading Bass: C135 – 2 x 135 mm alloy cone units with short-coil long-gap motor design |
| Bass loading | Exponentially tapered tube enhanced bass reflex |
| Sensitivity | 87 dB @ 2,83 VRMS at 1 m on axis |
| Nominal impedance (Ω) | 6 nominal, 4 minimum, low reactance |
| Frequency range (Hz) | -6 dB points: 33 – 36.000 |
| First D26 Break Up mode (Hz) | 44.000 |
| Frequency response (Hz) | 36 – 33.000 +/- 2 dB on reference |
| Harmonic distortion (2nd and 3rd harmonics) | < 0.5% over frequency range |
| Cross over frequencies (Hz) | 220 - 880 - 3.500 |
| Power handling (music program) | 800 watts rms |
| Loudspeaker dimensions | 1.161mm (H) x 341mm (W) x 578mm (D) |
| Net weight | 42 kg (internal crossover) - 36,9 kg (external crossover) |



For more details about the GIYA G3 SERIES 2 or accessories to complement, please consult your local specialist retailer, or visit www.vividaudio.com



GIYA G1
Spirit



GIYA G2
series 2



GIYA G4
series 2



VIVID audio

Headquarters

Vivid Audio Holding B.V. • Kaap Hoordreef 66 • 3563 AW Utrecht • The Netherlands
Tel: +31 (0) 626 776 787 • Email: info@vividaudio.com

vividaudio.com

©2021 Vivid Audio. All rights reserved.